

Umbrella Exhibition 2009

PURPOSE The Columbia Association would like to encourage youth (ages 5-17) and adults (ages 18 and up) to express, through original artwork, the concept of this year's theme. A large golf umbrella will be the canvas upon which imagery is placed. Completed umbrellas will be displayed during the Columbia International Day on Saturday, July 18, 2009 at Lake Kittamaqundi, Columbia, MD. (Lake Kittamaqundi is located directly across from the Columbia Mall on Little Patuxent Parkway.)

THEME Each year the Columbia International Day Festival chooses a theme related to multi-cultured subjects. This year's theme is *It's a Beautiful World*. Using this theme, artists are limited only by their imagination. Participants are encouraged to visually express their ideas, thoughts and feelings in exploring the many beautiful places, cultures, and ideas around the world.

WHO MAY ENTER Individuals ages 5 and up can participate. Parent and child entries, youth group efforts, and adult collaborations are also welcome.

CATEGORIES A panel of jurors will select a winner in each of the following groups:

Group 1 (ages 5-7)	Group 4 (ages 14-17)	Group 7 (best youth group effort)
Group 2 (ages 8-10)	Group 5 (adult, over 18)	Group 8 (best adult group effort)
Group 3 (ages 11-13)	Group 6 (best parent and child)	

In addition to the jurors' awards, this exhibition will feature the viewers' choice awards for the best entries in each category.

ART MATERIAL SPECIFICATIONS Each participant will receive a golf umbrella. All imagery must be placed on the exposed area of the umbrella, as they will be displayed open and at waist level. Artists must use paint, glues, and additional materials/media that are waterproof and can sustain a 24-hour stay in the outdoors. Umbrellas are not required to be closed upon delivery to the Art Center. Artists are welcome to utilize three-dimensional objects on the umbrella as long as they are safely secured to it and the umbrella is transferable to and from the Art Center.

ENTRIES To participate please fill out and return the entry form to Columbia Art Center, 6100 Foreland Garth, Columbia, MD 21045 no later than 9pm on Friday, July 13, 2009. Installation of the Umbrella exhibition will occur in the early morning on July 18, and will remain open to the public until sunset that day. No umbrellas may be removed from the exhibition on Saturday during the exhibition. Umbrellas will be returned to the Columbia Art Center for artist pick-up Tuesday, July 21 through Thursday, July 23, 9am-9pm; Friday, July 24 and Saturday, July 25, 9am-5pm; and Sunday, July 26, 11am-5pm. Umbrellas which are not claimed during this timeframe will become the property of the Columbia Art Center. If you know you are unavailable to pick up your umbrella during that week, please call to make alternative arrangements. Each entry must be the original design and artwork of the participant(s).

It's a Beautiful World

ENTRY FEE A \$20 (+\$10 additional umbrellas) non-refundable entry fee is required upon receiving each umbrella. For families requesting more than one umbrella, each additional umbrella will be \$10.

AWARDS On the morning of Columbia International Day, a panel of two professional artists and one community member will judge the umbrella entries on the basis of originality, composition and adherence to the theme. People attending the event will also have the opportunity to vote for their favorite entry in all of the categories. There will be one winning entry in each category. Winners will be announced 4-4:30pm at the main stage and also be posted by the stage. Prizes will be mailed to the winning artists.

CONDITIONS OF ENTRY The Columbia Association is not responsible for any damage or loss which may occur. Every care will be taken to secure the umbrellas, but please be aware that exposure to water and/or severe weather may damage the structure of the work.

AGREEMENT Submission of an entry constitutes an agreement to all of the conditions set forth in this prospectus. The Columbia International Day Festival reserves the right not to include a work in the exhibition for any reason.

ENTRY FORM Submission deadline Fri. July 13, 5pm. Umbrella delivery deadline Fri. July 17, 5pm

Name(s) _____

Age of child or teenager _____ If adult entry, check box to indicate 18 years of age or over

Address _____

City/State/Zip _____

Phone _____ Day _____ Evening

Email _____

Please mail or deliver complete entry form with \$20 single umbrella/\$10 each additional umbrella entry fee to: *(Checks and Visa, MasterCard and American Express are accepted.)*

Columbia Art Center
6100 Foreland Garth
Columbia, MD 21045
(Located right off of Tamar Drive in Long Reach Village Center, across the courtyard from Safeway)

Phone: 410-730-0075 Website: ColumbiaArtCenter.org
Email: art.staff@columbiaassociation.com
Upon receipt of your entry form, you will be able to pick up your umbrella.

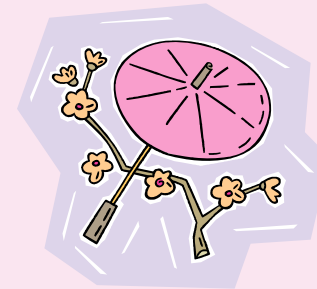
The deadline for submission of completed umbrellas is Friday, July 17 at 5pm.

IMPORTANT DATES

June 12-July 13.....	Submission of entry forms, \$20 single umbrella/\$10 additional umbrella entry fee and pick up of umbrellas
July 13..... 5pm	Deadline for submission of entry forms to: <i>Columbia Art Center (in Long Reach Village Center)</i> 6100 Foreland Garth Columbia, MD 21045
July 11-17.....	Delivery of completed umbrellas to: <i>Columbia Art Center (in Long Reach Village Center)</i> 6100 Foreland Garth Columbia, MD 21045
July 17..... 5pm.....	Deadline for delivery of completed umbrellas
July 18..... 7:30am-10am	Umbrella exhibition installation
10am-11am.....	Jury selection process
11am-3pm	Viewer voting
3pm-4pm	Viewer votes counted
4pm-4:30pm	Announcements of winners
July 21-26.....	Pick up umbrellas at Columbia Art Center
9am-9pm.....	Tue-Thu from 9am-9pm
9am-5pm.....	Fri-Sat from 9am-5pm
11am-5pm.....	Sun from 11am-5pm

COLUMBIA ART CENTER
Umbrella Exhibition
2009

**IT'S A
BEAUTIFUL WORLD**



**COLUMBIA
INTERNATIONAL DAY**
Saturday, July 18, 11am-Sunset

Call for Entries!

ALL AGES welcome to participate!